

# ART EXPEDITION WITH ASHLEY FROST AND NICOLE KELLY IN THE REMOTE ARID ZONE OF NORTH WESTERN NEW SOUTH WALES.

Join artists Ashley Frost and Nicole Kelly for a 7 day painting trip at Fowlers Gap Research Station (March 1 – 7, 2022)

\*Feb 28 night at Broken Hill (optional extra)



## REMOTE ARID ZONE OF NORTHERN NSW, FOWLERS GAP RESEARCH STATION

Fowlers Gap Research Station is a significant arid zone reference area in Australia and the only research station in the arid zone of New South Wales. Located 112 kilometres north of Broken Hill, the 39,000-hectare property was established in 1966 and has been extensively used by many significant Australian artists. It is an important site for teaching, with regular field excursions by students from both UNSW Science and UNSW Art and Design. The remote Station, with its impressive landscape, eco-trails and wildlife-viewing platforms, attracts artists as well as local and international visitors.

# ABOUT THE ARTISTS

## NICOLE KELLY

Nicole Kelly is a contemporary Australian artist whose practice explores the spatial experiences of the land, intimately observed and sensitively felt. Winner of the prestigious Brett Whiteley Travelling Art Scholarship (2009) and the Hurford Hardwood Portrait Prize (2018), Nicole has undertaken residencies in France, Spain, across Australia and has completed major public commissions for the Sutherland and St George Hospitals in Sydney. Her work has been selected for inclusion in the Lester Prize for Portraiture at the Art Gallery of WA (2019, 2018, 2017, 2015), Portia Geach Memorial Award (2020, 2019, 2015, 2014), Salon des Refuses (2019) and Wynne Prize at the Art Gallery of NSW (2015).

Kelly's work is held in the collections of the Moran Art Foundation and Lismore Regional Gallery, Shoal haven Regional Gallery among others. She has been teaching painting and drawing for ten years. Kelly is represented by Arthouse Gallery, Sydney and THIS IS NO FANTASY Gallery, Melbourne.



## ASHLEY FROST

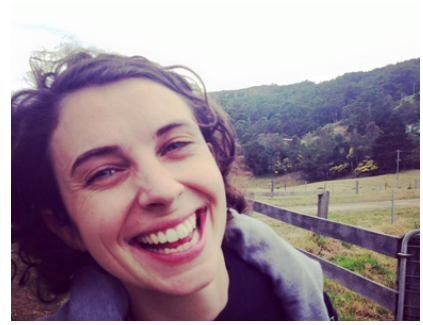
Ashley Frost is a contemporary landscape artist and a graduate of the National Art School. His career as a professional artist and educator spans twenty-five years, during which time he has had exhibitions in Australia and abroad including New York, Tokyo, Guangzhou and Hong Kong. He has had art residencies in Texas, Antarctica, Norway and Long Island New York. He won the Kings Art Prize in 2004, the Hills Art Prize 2018, the Mosman Art Prize Viewer's Choice in 2017 and Highly Commended in the 2021 Flow Contemporary Watercolour Prize. He has been a finalist in the Archibald 2017, Wynne 2021 and Sulman 2021 prizes and a number of other art prizes, including the Paddington Art Prize, Adelaide Perry, the NSW Plein Air Prize, the Gallipoli Prize and the Kedumba Drawing Award in 2020. His works are in collections around Australia including Mosman Art Gallery, Wollongong City Gallery and the University of Wollongong. He is represented by Stella Downer Fine Art.



# ABOUT THE FOOD AND EXPERIENCE

## LAUREN FORLONGE

The trip will be fully catered by Lauren Forlonge, events manager at CANVA, one of the fastest-growing technology companies in the world. Lauren has been working in hospitality for 20 years and now heads a team that provides food, drinks, hospitality, regular events and fun to 1000 staff at the CANVA office in Sydney.



## LANDSCAPE PAINTING WORKSHOP

The 7 day workshop focuses on painting and drawing directly from nature. Participants will improve their skills under the guidance of Ashley Frost and Nicole Kelly who are both artists and experienced art educators. During the workshop Ashley and Nicole will expose the students to a variety of ideas and approaches with a mix of teaching demonstrations as well as informal discussions over meals in the evenings. Topics discussed include composition, colour, content, influences and the illusion of space. Learn and develop new skills in a beautiful and relaxed environment.

## CLIMATE

The climate of Fowers Gap is typical of the arid region of southern Australia, with mild winters and hot summers. During March, when we'll be visiting, it is still a warm month, with average temperature fluctuating between 28.8°C and 17°C. We will plan for painting outdoors in the early morning or afternoon, retreating to the studio during the day and sipping wine in front of an open fire at night.

## ACCOMMODATION

There are two forms of accommodation available during our trip, Cottage 1 and the Quarters.

### COTTAGE 1

Cottage 1 is a self-contained 5 bedroom cottage with full kitchen, tea and coffee facilities, air conditioning, a gas heater and a wrap-around balcony that can double as a painting studio. Each room has two single beds and one room will be allocated per person.





COTTAGE 1  
PRICE PER PERSON \$3090

## THE QUARTERS

The Quarters has seven twin rooms each off a long balcony that can double as a painting studio. Each room has air con, two single beds and one room will be allocated per person with access to a shared kitchenette and tea and coffee making facilities. The Quarters has a large common room and dining area that can be used as a studio during the day.

The Quarters is where we'll meet up at the end of every day for meals and drinks.



THE QUARTERS  
PRICE PER PERSON \$2860

# 6 DAY LANDSCAPE PAINTING RETREAT AT FOWLERS GAP (MARCH 1 - 7, 2021)

## DAY 1 (OPTIONAL EXTRA): MONDAY FEBRUARY 28 - ARRIVE BROKEN HILL

Workshop guests will be met at Broken Hill airport at 2pm (arrangements can be made for flights arriving later) and transferred to the heritage Palace hotel, Broken Hill, the backdrop for the movie Priscilla, Queen of the Desert. We will have lunch at the Silly Goat café on arrival. In the late afternoon we will drive to the famous Sculpture Symposium for a sunset, followed by dinner and drinks back at the Palace.

\*\*Accommodation at the Palace books out extremely fast. Once your booking is confirmed with us we highly recommend you book a stay at the Palace where we will be staying the night. Please note you will be responsible for all accommodation, lunch and dinner in Broken Hill and it is not included in our costs.

\*\*\* If you would like to opt out of a night in Broken Hill this is no problem, we can arrange to collect you from the airport Tuesday Morning.

## OFFICIAL DAY 1: TUESDAY MARCH 1

After breakfast, we visit Broken Hill Regional Gallery for a Gallery tour before we travel to Fowlers Gap Research Station. After settling in and a talk from Fowlers Gap director Keith Leggit, we will have a full afternoon of painting under the shade of the Rivergum's lining the property. These old trees provide a variety of wonderful forms to paint. Artists, Ashley and Nicole will walk you through the bush to find suitable painting locations and assist workshop members individually throughout the afternoon. Lunch and afternoon tea will be provided on location. Dinner and drinks in front of the fire (if it is not too hot) back at the Quarters.

## DAY 2: WEDNESDAY MARCH 2

Today we travel to Mutawinji National Park for a day tour to explore some of the country's most sacred sites. This area is home to Aboriginal Stencils and Engravings along Creeks and Cliffs walks with expansive views of the Gorge and soaring red cliffs. We recommend you bring cameras and a sketchbook as this is a perfect resource gathering location for future studio work. Lunch and afternoon tea will be provided on location. Relax in the evenings in front of the fire (if it is not too hot) over a drink and informal discussions with Ashley and Nicole on their differing approaches to the Principles and Elements of Painting.

## DAY 3: THURSDAY MARCH 3

For the early rises there will be an optional morning walk to the lake at first light for some sketching. After breakfast we will explore the landscape in and around the property. There are various interesting walks and popular painting locations throughout the property to be explored. In the late afternoon, we will drive to the leopard trees found on the property, a species of tree endemic to inland areas of eastern Australia where Ashley and Nicole will both give a painting demonstration. Here you will have the opportunity to paint and draw this incredible and diverse landscape with the guidance and assistance of Ashley and Nicole. As the sun sets, enjoy a drink and a cheese platter with informal discussion about the days painting and drawing. This is a perfect time to ask questions and get feedback on your work.

## DAY 4: FRIDAY MARCH 4

Today after breakfast we travel by 4WD to Ochre House Artist Retreat, situated in a remote gorge on the station where you can immerse yourself in a varied and multi-coloured landscape that has inspired leading and upcoming national and international artists and is a perfect painting location. Lunch and afternoon tea will be provided on location. Relax in the evenings in front of the fire, over a drink and informal discussions with Nicole and Ashley on the Principles of Painting.

## DAY 5: SATURDAY MARCH 5

Today Ashley and Nicole will both give demonstrations on making a monoprint. You will then have a full studio day ahead to develop your own mono prints or to further develop works in the studio. Lunch and afternoon tea will be provided outside the Quarters. Relax in the evenings in front of the fire over a drink and discussions with Ashley and Nicole on the work of other contemporary artists who have worked out at Fowlers Gap.

## DAY 6: SUNDAY MARCH 6

Our final full day of painting will be spent exploring the surrounding landscape with Ashley and Nicole as they leads the group to picturesque painting spots along the property. Lunch will be back at the homestead. At 3pm the guests will meet for a final critique and to show their artworks to the rest of the group. Tonight will be our last dinner together celebrating a shared creative experience and new friendships.

## DAY 7: MONDAY MARCH 7

After a relaxing breakfast, we will head back to Broken Hill where our guests will be transferred to the airport to meet their departing flights.

## INCLUSIONS

- Individual tuition by artist & tutor, Ashley Frost & Nicole Kelly
- Private transfers from broken hill airport to the station & return
- 5 x nights accommodation at fowlers gap research station
- All meals included - breakfast & dinner at the quarters, lunches on location
- Mutawinji guided cultural tour
- transport in mini bus and 4wd vehicle x 7 days to locations of interest
- En plein air painting each day in different locations with the artist
- Painting demonstration & artist's critique
- Informal discussions in the evenings on composition, colour & the illusion of space
- Prices are inclusive of GST

## EXCLUSIONS

- Airfares
- Travel insurance
- Alcoholic & soft drinks
- Art materials
- Easels
- Lunch at the Silly Goat café & dinner at the palace, Broken Hill
- 1 x night accommodation at the Palace, Broken Hill

# WHAT TO BRING

## SUGGESTED LIST OF PERSONAL ITEMS

Conditions at Fowlers Gap can vary greatly within a 24-hour period, whatever the time of year. Whilst being prepared for the typical weather of the season of your Residency, you should pack some clothing and gear for both hot and cold conditions, and even be prepared for wet weather.

## ESSENTIAL ITEMS:

- BROAD-BRIMMED HAT
- SUNSCREEN
- EYE PROTECTION
- STRONG SHOES OR BOOTS
- RAIN COAT
- TORCH (AND BATTERIES) – A SMALL ONE IS HANDY. BRING SPARE BATTERIES
- PLASTIC BAGS FOR COLLECTING THINGS – OPTIONAL
- SMALL BACKPACK (DAYPACK)
- MATCHES OR LIGHTER (THESE ARE A SAFETY ITEM, IN CASE YOU GET LOST)
- BOTTLE FOR DRINKING WATER (MUST FIT IN YOUR BACKPACK) – ESSENTIAL
- SMALL BOTTLE FOR PAINTING WATER – E.G. WATERCOLOURS
- INSECT REPELLENT
- SMALL TUBE ANTISEPTIC CREAM
- BAND-AIDS
- CREPE BANDAGE
- LIP GUARD AND PERSONAL TOILETRIES
- BODY MOISTURISER
- BINOCULARS (OPTIONAL)
- CAMERA AND FILM (BRING ENOUGH FILM – NONE AVAILABLE THERE)
- PLASTIC BAG FOR CAMERA AND FILM – TO KEEP DUST OUT
- PLASTIC BAG FOR PAPER
- PLASTIC BAG FOR DIRTY CLOTHES
- LAUNDRY POWDER AND SOAP
- A SOFT BAG IS BETTER FOR YOUR CLOTHES AND FOR PACKING– KEEP EVERYTHING
- COMPACT
- A MOSQUITO/FLY HEAD-NET– HIGHLY RECOMMENDED
- SOCK PROTECTORS – AVAILABLE IN BROKEN HILL AND PREVENT BURRS INSIDE SHOES
- TOILETRIES AND ANY PERSONAL MEDICATIONS
- PHONE CHARGER

# PLEASE COME PREPARED FOR BOTH HOT AND COLD WEATHER

## FOR COLD WEATHER

- A WARM, WATERPROOF, WIND-RESISTANT JACKET
- WARM, LONG TROUSERS
- OLD, WARM JUMPERS – YOU WILL GET DIRTY
- LONG-SLEEVED SHIRTS ARE PREFERABLE
- WOOLLEN GLOVES OR MITTENS
- WARM SOCKS
- HOT WATER BOTTLE
- BEANIE

## FOR HOT WEATHER

- LIGHTWEIGHT, LIGHT COLOURED, LOOSE FITTING, POROUS NATURAL FIBRE CLOTHING IS BEST
- LONG SLEEVED SHIRTS AND TROUSERS FOR SUN PROTECTION.
- BATHING SUIT – HOMESTEAD COMPLEX HAS A SWIMMING POOL (MAY OR MAY NOT BE IN OPERATION)

